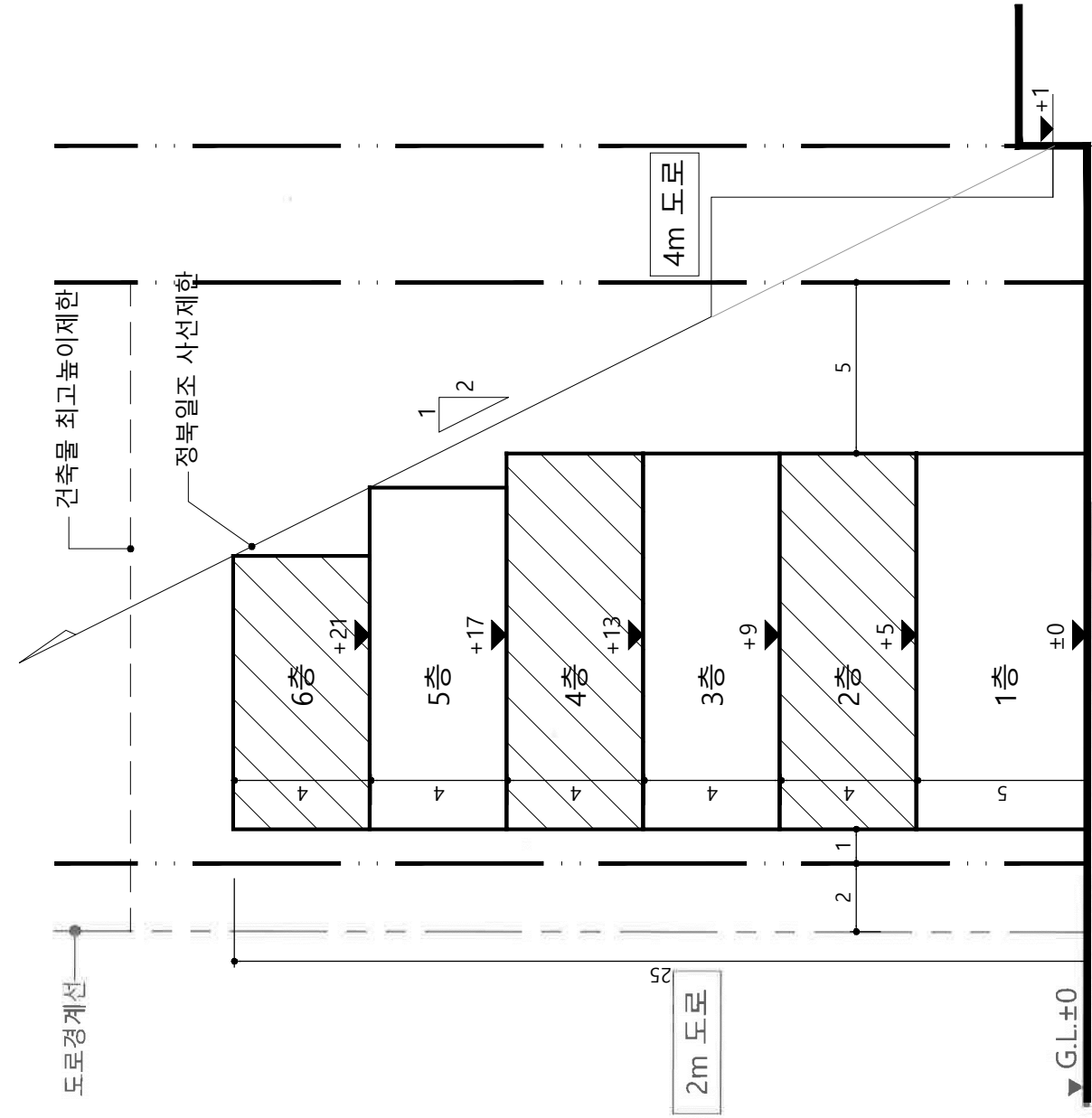


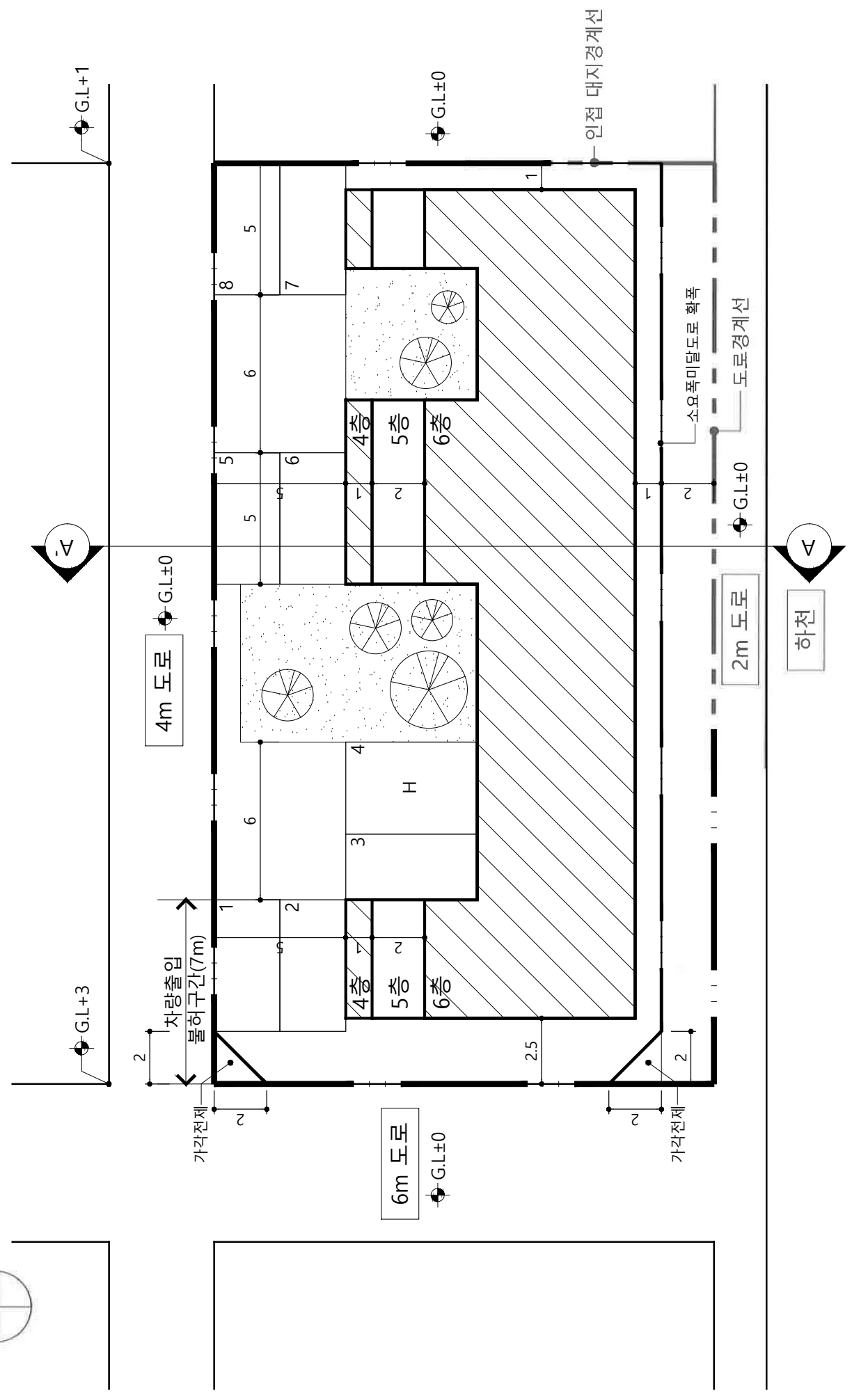
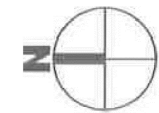
과 목: 대 지 계 획

■ 계획개요

대지면적	591	m ²
건축면적	261.5	m ²
건폐율	44.24	%
용적률	255.66	%
지상층 바닥면적	1층	261.5 m ²
	2층	261.5 m ²
	3층	261.5 m ²
	4층	261.5 m ²
	5층	247 m ²
	6층	218 m ²
연면적	1,511	m ²



A-A' 단면도
축척 : 1/200



배치도
축척 : 1/200