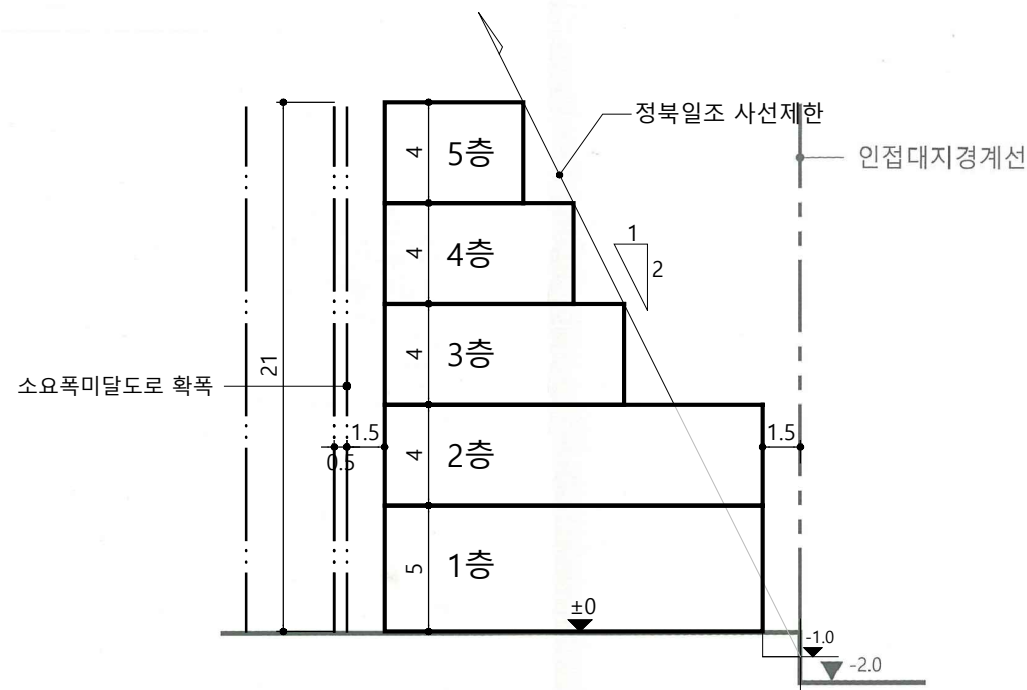
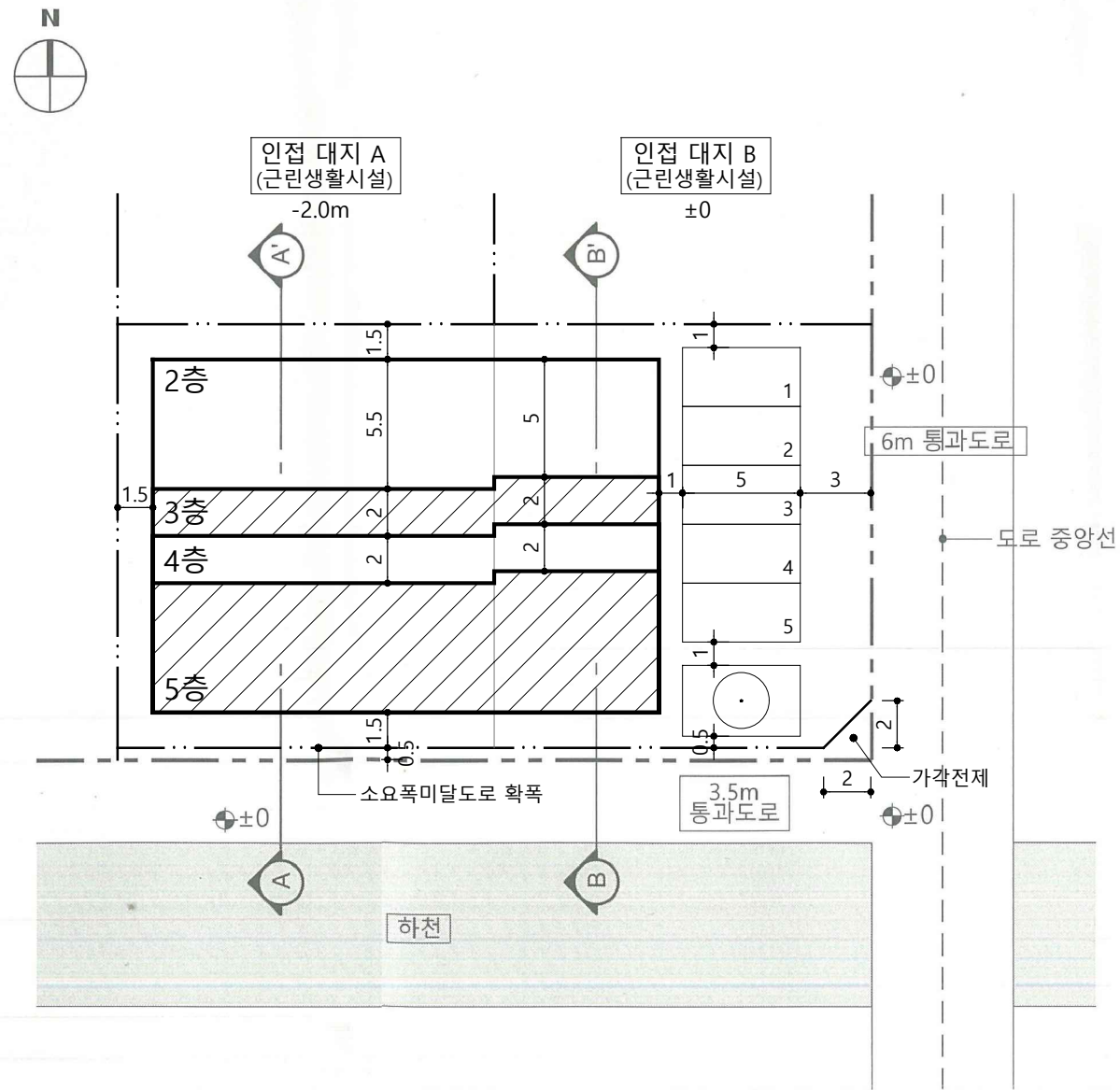


■ 계획개요

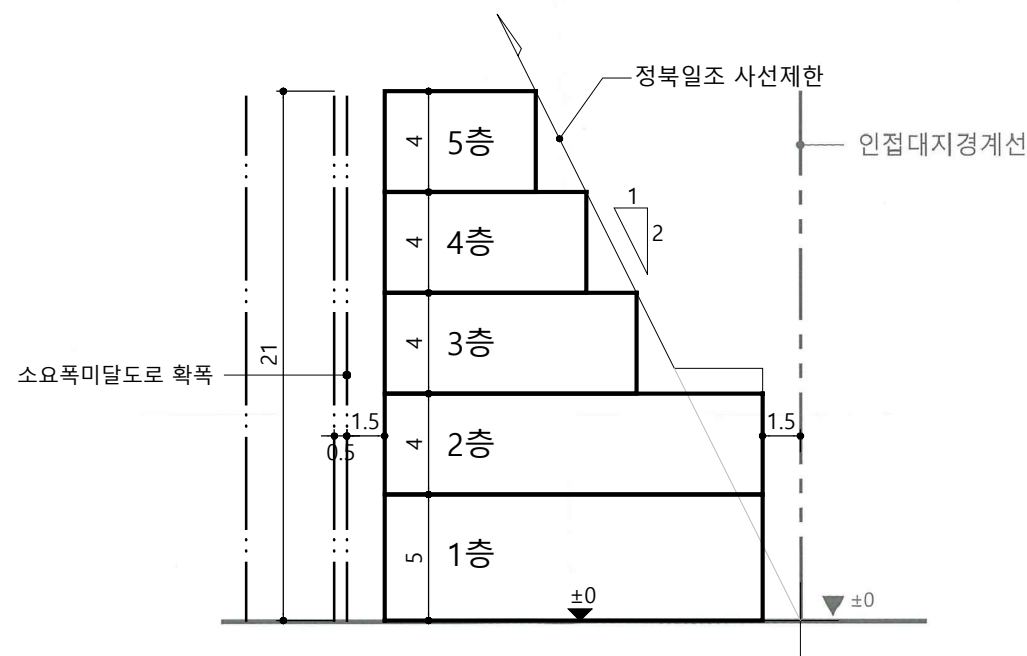
대지면적	574	m ²
건폐율	56.2	%
용적률	198.5	%
지상층 바닥면적	5 층	121.8 m ²
	4 층	164.8 m ²
	3 층	207.8 m ²
	2 층	322.5 m ²
	1 층	322.5 m ²
연면적	1,139.4	m ²



A-A' 단면도
축척: 1/300



배치도
축척: 1/300



B-B' 단면도
축척: 1/300