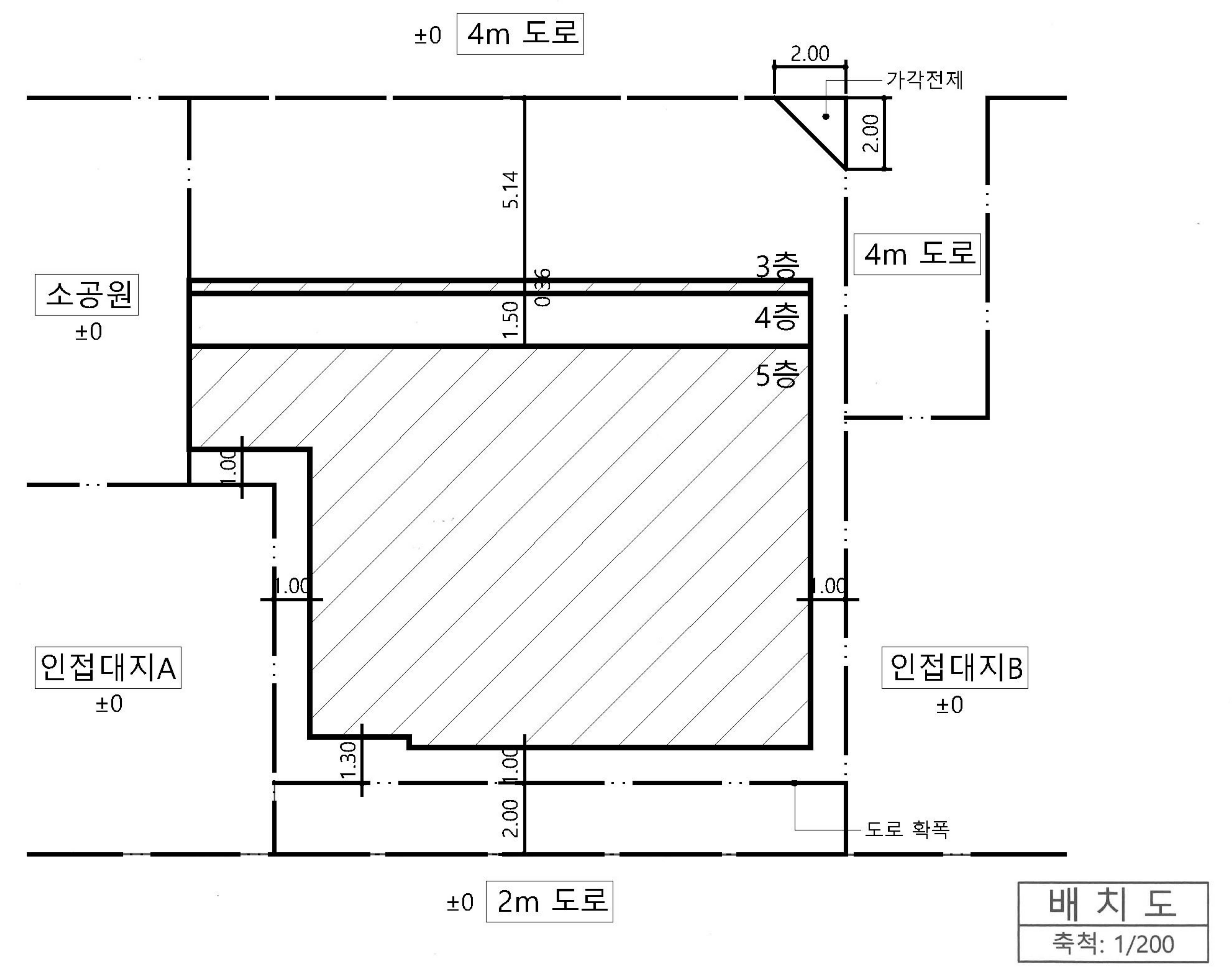
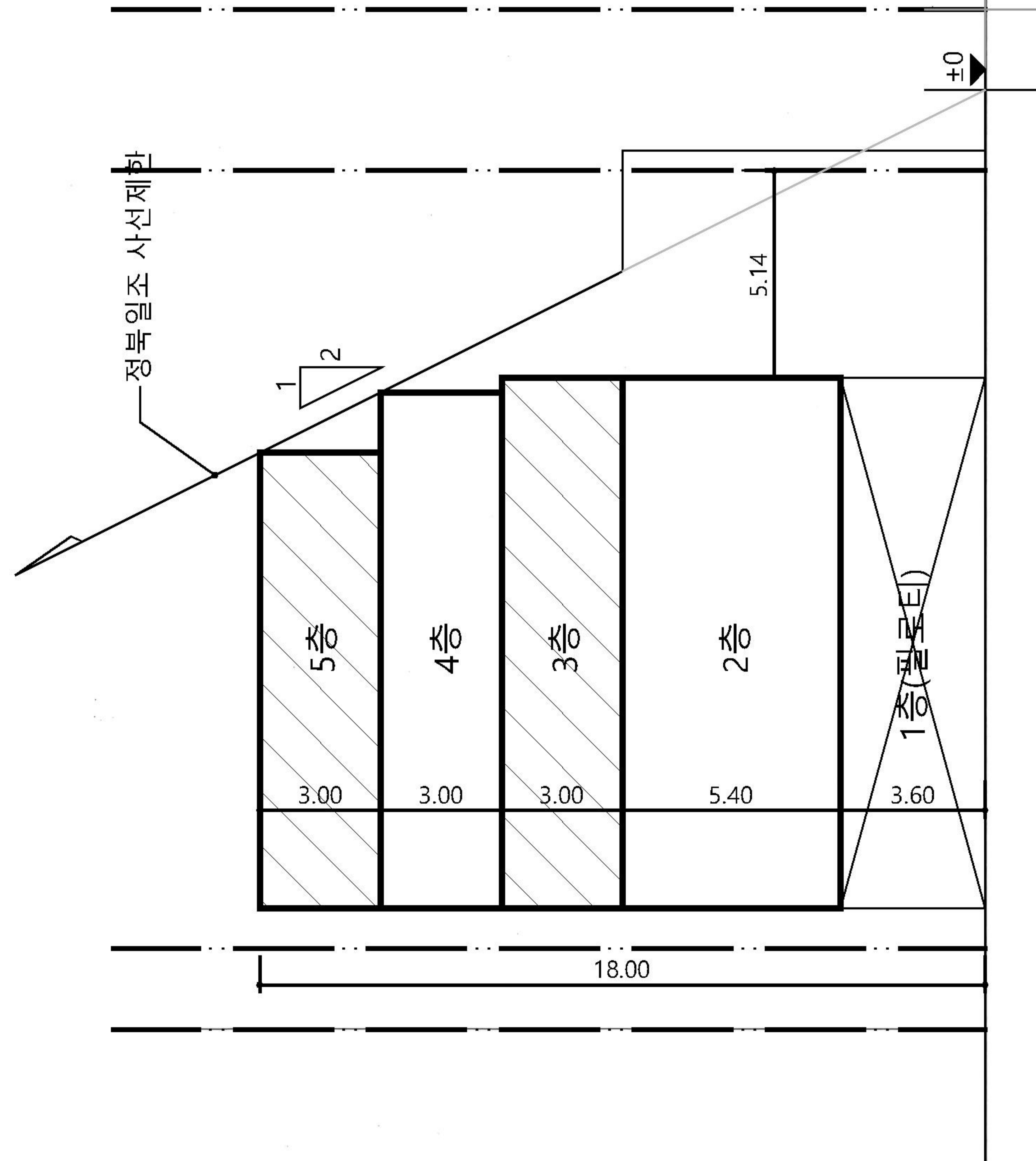
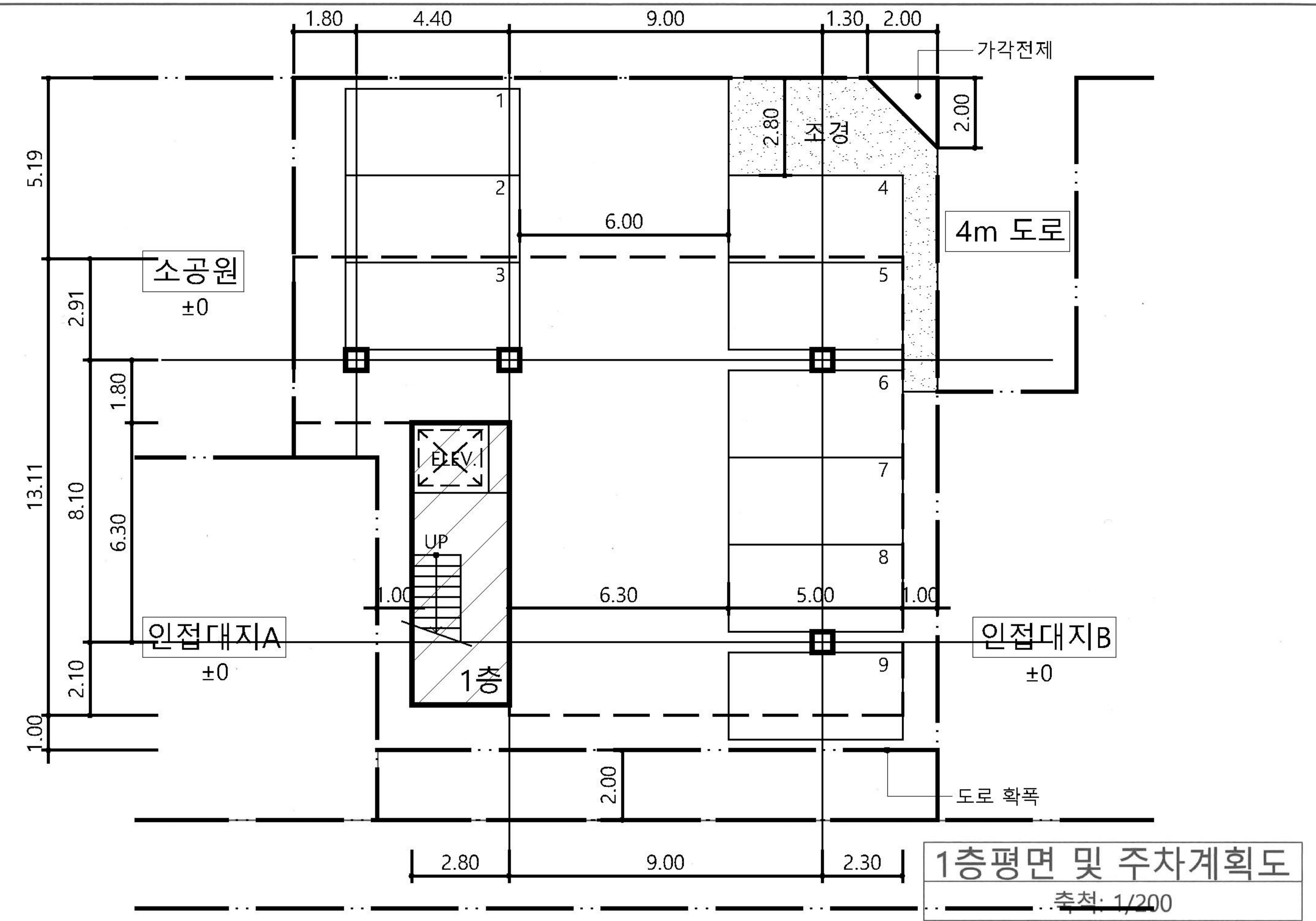


■ 계획개요

대지면적	334.89 m <sup>2</sup>	
건축면적	200.93 m <sup>2</sup>	
건폐율	60 %	
용적률	235.15 %	
조경면적	21 m <sup>2</sup>	
층별면적	5층	168.35 m <sup>2</sup>
	4층	194.60 m <sup>2</sup>
	3층	200.93 m <sup>2</sup>
	2층	200.93 m <sup>2</sup>
	1층	22.68 m <sup>2</sup>
연면적	787.49 m <sup>2</sup>	



A-A'단면도  
축척: 1/200

배치도  
축척: 1/200